

Proportional pressure regulator VPPI

FESTO



Quiet regulation!

Highlights

- Virtually silent
- Flexible
- Highly dynamic up to 30 Hz
- Precise and stable
- Many pressure ranges:
–1 ... 12 bar

The new proportional pressure regulator VPPI is directly actuated in all normal widths, without the need for preliminary stages or pilot valves. Thanks to the pressure compensating element, the valve regulates dynamically and precisely even in the large nominal widths. The powerful and low-friction moving coil actuator makes the VPPI highly dynamic. The subordinate position controller ensures high stability.

Preset or custom? Both!

Direct actuation with three preset values – for small or large volumes or continuous flow – enable a very dynamic pressure adjustment. A customer-specific preset value independently defines a suitable control behaviour and speeds up the adjustment of the setpoint value.

Full graphic TFT display

All necessary settings can be carried out via the display, with much of the information available in plain text.

Very flexible

If VPPI detects a PWM signal (pulse-width modulation) within a frequency range of 200 to 800 Hz, the internal control electronics are changed over automatically. The pressure range that has been set can be regulated with a high level from 20 – 100%. In addition, it can be switched to digital inputs with up to 7 preset pressure values.

Best performance

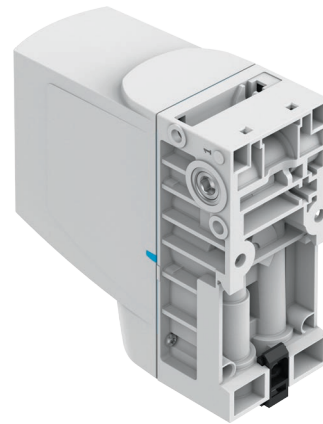
The VPPI now also covers both the vacuum range and pressure ranges up to 12 bar. The nominal widths are the same in both flow directions.

Proportional pressure regulator VPPI

Clever technologies that make you flexible

Further outstanding characteristics of the VPPI:

- The powerful moving coil actuator also ensures that setpoint value changes are quick, easy and precise.
- PWM operation: the VPPI detects PWM signals generated by any machine controller.
The internal control electronics automatically adapts.
- Fast response with max. frequency of 30 Hz.
- An IO-Link® interface and a fieldbus connection via CTEU to control the valves is in preparation.



The display is always easy to read as it can be rotated depending on the mounting position.

The VPPI can be used in these industries:

- Main industry segments
- Electronics and Assembly
 - Automotive
 - Food and packaging
 - Machine tools

The VPPI is best suited for the following applications:

- Pressure regulation
- Testing
- Dispensing
- Pressing
- Press-fitting

Technical data	
Valve function	3-way proportional pressure regulator
Flow rate in l/min	1 → 2
	3 → 2
Pressure ranges	~ 1000
	~ 1000
Pressure ranges	-1 ... 1 bar
	-1 ... 0 bar
	0 ... 2 bar
	0 ... 6 bar
	0 ... 10 bar
	0 ... 12 bar
Pneumatic connection	G1/8"
Setpoint value	0 to 10 V / PWM / digital, 4 to 20 mA
Actual value	0 to 10 V, 4 to 20 mA
Electrical connection	M12, 5-pin
Degree of protection	IP65
Display	Full graphic TFT, rotatable